

2025.6.1~

Higashiura

# How to Separate and Throw Garbage in Higashiura

Quantity of waste once in a day for 1 person

2023 448g → Target 429g

## Request in throwing out the garbage.

- Burnable waste must be disposed until 8:00 in the morning on the collection day. Let's use the net, to cover the waste after disposal.
- Please be sure to put out the garbage in your area.
- Collection day might be changed on the year-end, New Year holidays, and bad weather day, so please check the public information, etc.

Please cooperate in decreasing and separation of waste disposal.

You can set-up notifications by searching the waste separation and collection days.



Town Official "LINE" here.

For inquiry : Higashiura Town Office Environment Division (Tel. 0562-83-3111)

## Household Garbage Collection Day

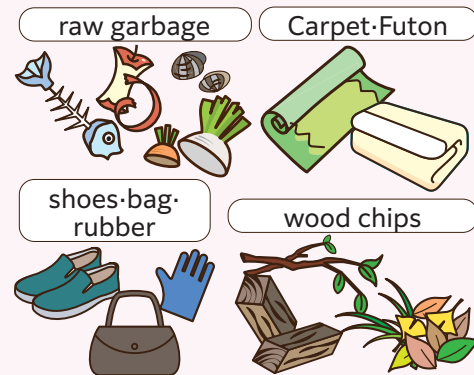
Classification Area	Burnable Garbage	RECYCLABLE WASTE			Non-Burnable Garbage	Combustibles
		Containers and packaging made of plastic	Papers & Clothes	Metals Bottles Plastic Bottles		
Morioka	Mon. & Thu.	Every Friday	2nd & 4th Tue.		1st & 3rd Tue.	
Moriokadai	Mon. & Thu.	Every Friday	1st & 3rd Tue.		2nd & 4th Tue.	
Ogawa	Mon. & Thu.	Every Tuesday	2nd & 4th Wed.		1st & 3rd Wed.	
Ogawa Shinden	Mon. & Thu.	Every Wednesday	1st & 3rd Fri.		2nd & 4th Fri.	
Higashigaoka	Mon. & Thu.	Every Tuesday	2nd & 4th Fri.		1st & 3rd Fri.	

Classification Area	Burnable Garbage	RECYCLABLE WASTE			Non-Burnable Garbage	Combustibles
		Containers and packaging made of plastic	Papers & Clothes	Metals Bottles Plastic Bottles		
Ishihama Higashi	Tue. & Fri.	Every Thursday	1st & 3rd Mon.		2nd & 4th Mon.	
Ishihama Naka	Tue. & Fri.	Every Thursday	1st & 3rd Wed.		2nd & 4th Wed.	
Ishihama Nishi	Tue. & Fri.	Every Thursday	2nd & 4th Mon.		1st & 3rd Mon.	
Ikuji	Tue. & Fri.	Every Wednesday	1st & 3rd Thu.		2nd & 4th Thu.	
Fujie	Tue. & Fri.	Every Wednesday	2nd & 4th Thu.		1st & 3rd Thu.	

## BURNABLE GARBAGE

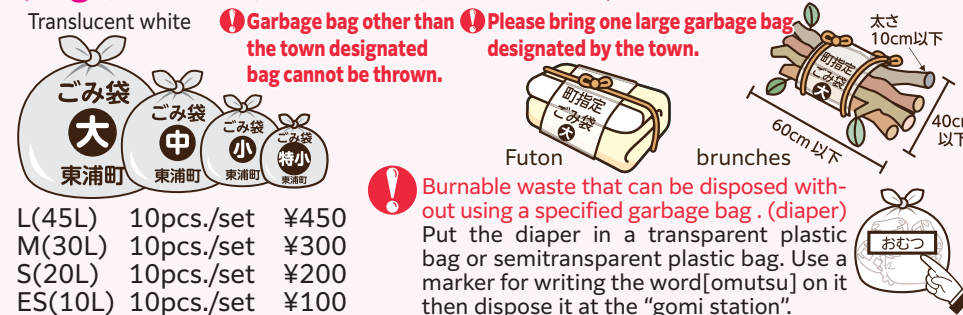
**Time** Early on the day, until 8:00 in the morning.  
**Place** BURNABLE WASTE COLLECTION SITE

### THINGS THAT CAN DISPOSE



### HOW TO TAKE OUT THE GARBAGE

Put into a waste bag specified by the town (large, medium, small size, extra small) and throw.



## RECYCLABLE WASTE

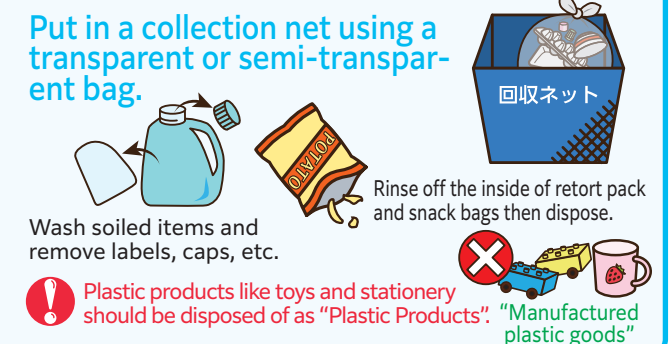
### Containers and packaging made of plastic

**Time** By 8 in the morning after the net was set.  
**Place** RECYCLABLE WASTE COLLECTION SITE

### THINGS THAT CAN DISPOSE



### HOW TO TAKE OUT THE GARBAGE



## RECYCLABLE WASTE Papers-Clothes

**Time** Early on the day, until 8:00 in the morning.  
**Place** RECYCLABLE WASTE COLLECTION SITE

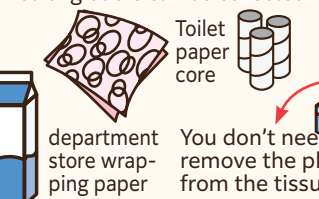
No collection on the fifth week.

### HOW TO SEPARATE



### ⑤ Anything other than ① to ④

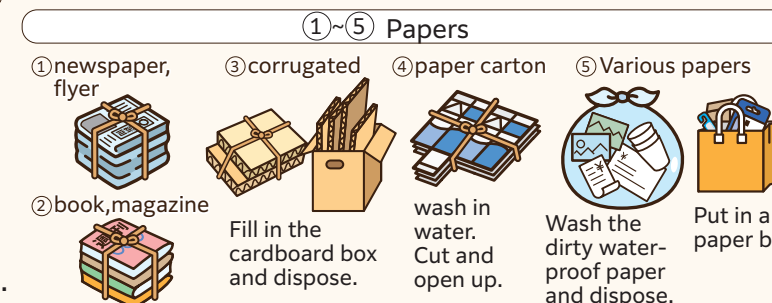
Items other than ①~④ that are not very dirty and have no strong odors can be collected.



### ⑥ clothing, towel, etc.

### HOW TO TAKE OUT THE GARBAGE

Papers→Tied the papers crosswise.  
Clothes→Put the cloth into a clear bag.



Do not throw your garbage during rainy day. If it gets wet it cannot be recycled.

Stuff which cannot be recycled→Burnable garbage  
Papers...Disposal diaper, Toilet paper, Tissue paper, Kitchen paper, Cooking sheet, Stained things, Things with a strong smell.  
Clothes...Unwashed cloth, underwear(pants etc.) futon, pillow, stuff toys, cushion, blanket etc.

You can set up notifications by searching waste separation and collection days via the town's official "LINE".

Town Official LINE [KURASHI NO ANNAI]→[WASTE]

Enter [clothing].

Reusable items and fabric waste are classified as burnable waste.

Search for the Waste Separation.

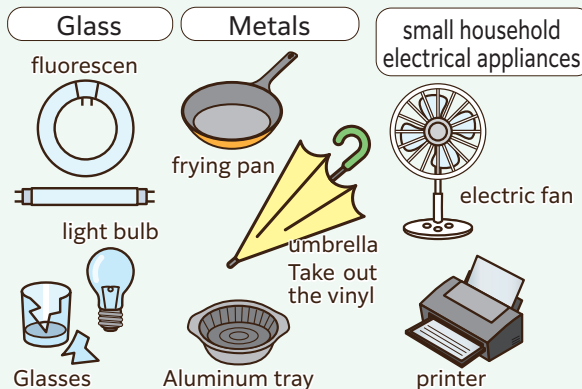
Town Official "LINE" here.

## NON-BURNABLE GARBAGE

**Time** By 8 in the morning after the container was set.

**Place** RECYCLABLE WASTE COLLECTION SITE

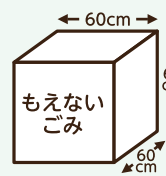
### THINGS THAT CAN DISPOSE



### HOW TO TAKE OUT THE GARBAGE

#### TO THE LIGHT BLUE CONTAINER

- Do not put inside the bag.
  - Disposal of computer and mobile phone is not possible.
  - The size of [non-burnable garbage] is below than 60 centimeters.
- The small electric appliances with a size of below 15cm of length and 40cm width of size are possible to dispose as recycled waste. For more details, please refer to page 3, [How to collect computer, small electric appliances].



## Combustibles

**Spray can Cassette Cylinder Lighter** **Time** By 8 in the morning after the container was set.

**Place** RECYCLABLE WASTE COLLECTION SITE

### THINGS THAT CAN DISPOSE



### HOW TO TAKE OUT THE GARBAGE

**TO THE BLUE CONTAINER**



- Collected by special collection container on the collection day of metals, bottles, plastic bottles. Spray can, cassette cylinder, lighter and other fire hazardous, dangerous things must be used all the contents of it. Please throw the spray can, cassette cylinder without making holes. (Possible to collect even with holes.)

## RECYCLABLE WASTE

**Time** When facilities are opened.  
You can take the waste whenever the box is available outside.

**Place** FACILITIES

### HOW TO SEPARATE

### HOW TO TAKE OUT THE GARBAGE

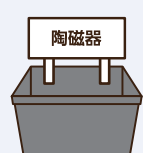
- ①Ceramics**  
a bowl, teacup, cup, flowerpot, vase ceramic bottle



- Ceramics such as the toilet bowl and tile are not collectible.

Things that are large enough to fit in a container.

TO THE GRAY CONTAINER



Collection containers are placed at Community Center, Shukaijyo (Moriokadai, Ken Ei Higashiura Jutaku, Ishihama Naka), Fureai Center, Fujie Kouminkan, and Town Office.

- ②used battery**



TO THE YELLOW CONTAINER

Put only battery in the specified container. (Do not put it in a vinyl bag.)

Collection containers are placed at Community Center, Shukaijyo (Moriokadai, Aoinoso Danchi, Ken Ei Higashiura Jutaku, Ishihama Naka, Hiraikadai), Post Office, Elementary and Junior high school, Gymnasium, Town Office, Fureai Center, Fujie Kouminkan and other facilities.

- ③waste food oil** Limited to vegetable edible oil.



Put in a pet bottle, bring and pour it in the specified drum. After pouring, it is necessary to close the cover.

TO THE BLUE DRUM



- Absolutely please do not put gasoline, Please reuse the pet bottle as bottle for waste edible oil as possible. kerosene, engine oil, etc.

Collection of blue drums are placed at the Community Center (Only Fujie area at Fujie Kouminkan.), Shukaijyo (Higashiura Ken Ei Jutaku, Ishihama Naka, Hiraikadai), Fureai Center, Town Office

## RECYCLABLE WASTE

### Plastic bottles

**Time** By 8 in the morning after the container was set.

**Place** RECYCLABLE WASTE COLLECTION SITE

### THINGS THAT CAN DISPOSE



### HOW TO TAKE OUT THE GARBAGE

- Take off the cap and label
- Put out bottle cap and label without this mark as [Containers and packaging made of plastic]



- Wash Plastic bottles.



- Put it in the container after being squashed.



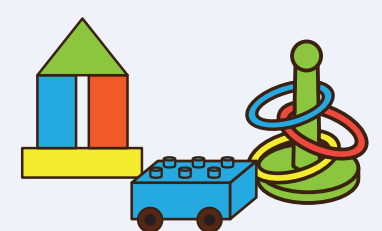
### ④Plastic manufactured goods



Only "Plastic Products" should be placed in the designated container.

Location of the collection container: Morioka Community Center, Town Office.

### ⑤Plastic Toys



Put only plastic toys into the designated collection box.

Location of the collection container: Each Jidoukan, Sougo Kosodate Shien Center, Town Office.



## Bulky Waste

One side is 60 centimeters and below 2 meters.

Furniture, electrical equipment, oil, gas product, play equipment, instrument, carpet, fittings, etc.

### Bring to the Tobu Chita Clean Center Directly

■Fee: 200 yen up to 10 kilograms. You need to pay 200 yen every 10 kilograms up.

■Time: Monday to Saturday, from 8:30 to 12:00 in the morning, and 13:00 to 16:30 in the afternoon.

■Holiday: Sunday, year-end and New Year holidays.

■Place: Oaza Morioka Aza Yoshino 41, Higashiura

■TEL: 0562-46-8855



### House-to-house pay garbage collection How to process

1. Please call bulk waste reception center.

Toll-free number ☎0120-530-276

Office hours is from Monday to Friday (8:30 in the morning until 5:00 in the afternoon). Except on National Holiday and New Year's Holiday.

2. Please tell us your address, name, phone number, item, and number. Maximum number of collection items is 5 in one time.

(Please let us know before a week of a collection day.)

### How to take out

1. You need 2,000 yen for one bulky waste. Please purchase at shop.

2. If you do not wish to write your name on the disposal ticket and do not want to re-use the item, check the disposal ticket and attach the ticket to the bulky waste.

3. Please place the waste outside the front door by 8 in the morning of the collection day. (We cannot go inside of your house.)

\*If you live in multifamily housing, please place the waste near the first floor or specified place by receptionist.

### Collection day is listed below.

Morioka・Ogawa・Ogawa Shinden...1st & 3rd Wed.  
Ishihama・Ikuji・Fujie...2nd & 4th Wed.

### Bulky waste management ticket agency (March 2025 at present).

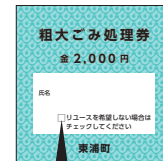
[Morioka]...Yaosho, Domy Higashiura, STUDIO ALPHA [Ogawa]...Shokaen, Mizutani-Kanamonoten, Takaraya, Kaneri shop, Yamani shop, Daikokuya, Yamaguchiya shop, Town office environment division, Administration service counter (Aeon mall Higashiura second floor)

[Shinden]...Shinden Beikoku Store, Ebisuya Higashiura Store

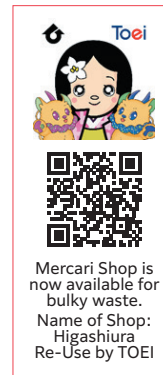
[Ishihama]...Family Mart Higashiura-Ishihama Store

[Ikuji]...Mizunoya, Ikuman Gofukuten, Family Mart Higashiura Ikuji Store

[Fujie]...Ikuji Tenshindo Pharmacy, Seven-Eleven Higashiura Fujie Store



If you do not wish to re-use the item, please put a check.



## Computer, compact appliances, four consumer electrical appliances

### Collection site (Computer-Compact appliances)

#### Collective items

Small electric appliances collection box inlet [15cm in length, 40cm in width]. Things which is possible to insert like small electric appliances, computer, mobile phone.

#### Collection site

Each area of Community Center, Shuukai jyo [Moriokadai, Higashigaoka, Ishihama Naka, Higashiura Ken Ei Juutaku].

\*Television is listed on the articles of four consumer electronics, it is not possible to dispose. For details,

### Collection by business operators with which agreements have been concluded.

Will be collected from the house by the town and cooperating business partners Renet Japan Recycle Co., Ltd. / SG Moving Co., Ltd.

#### Take out from the house.

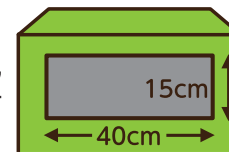
Take out the household appliances including the 4 items from the house and will be collected. Please make an application thru Renet Japan Recycle Co. Ltd. Homepage or by phone.

HP: <https://www.sg-renet.jp/> TEL: 0570-056-006 Assistance time AM 10:00-PM 5:00

#### One box is free including computer.

Computer and small appliances will be collected from the house by takyubin. Please make an application thru Renet Japan Recycle Co. Ltd. Homepage.

HP: <https://www.renet.jp/>



### Four consumer electrical appliances (TV, air-conditioning, refrigerator, washing machine, tumble drier)

Return items to the store where they were purchased or to a store that accepts trade-ins.

If returning to a store is difficult, pay the recycling fee at the post office and then bring the item to the designated collection site.

Request to bring it in an authorized contractor of the town (separate transportation fees are required). Home appliances recycling fee differs depends on the manufacturer and size.

#### Inquiry regarding the recycled home appliance.

Home Appliance Recycling Reception Center TEL: 0120-319-640

Refer to URL for recycle charge  
Home Appliance Recycling Reception Center HP



#### Designated place near the town.

TOEI Co. Ltd.

TEL: 0569-36-3317

Address: Tokoname Shi Ooso Chou 4 Chome 64 Ban

### Production maker voluntarily collect (Personal Computer)

Production maker voluntarily collect computer and recycle. Please contact the product maker and dispose.

For more information, please make an inquiry at Computer 3R Promotion Association.

General Corporation PC 3R Promotion Association

TEL: 03-5282-7685 ✉ [webmaster@pc3r.jp](mailto:webmaster@pc3r.jp) HP: <http://www.pc3r.jp/>

## Waste not collected in town

Are not possible for disposal at the town garbage station

### Waste come from the business (Garbage from business activities (Are not possible for disposal at the town garbage station).)

Waste comes from shop, restaurant, establishment, hospital, and factory. You need to bring General waste (combustible) at the clean center directly or ask town permission trader. Also, in the case of industrial waste, you need to ask trader who has a permission from the prefecture.

### Large amount of waste

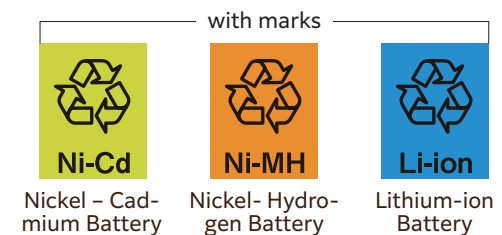
Temporary amount of garbage because of house-moving, big clean-up, etc. (In case that the household belongings are more than 5 items.) Please bring them at the clean center directly. However, you may ask a request of temporary large disposal material in a company which is a licensed trader of the town. (with charge) Please inquire at Environment Division regarding the licenser.

### Difficult stuff to dispose (Stuff which cannot be disposed at the Tobu Chita clean center.)

Motorcycle, propane gas cylinder, battery, car relation parts, construction debris. Please ask the shop where you bought the stuff or special trader of waste to dispose.

## Rechargeable battery

Lithium-ion Battery, etc



### Place

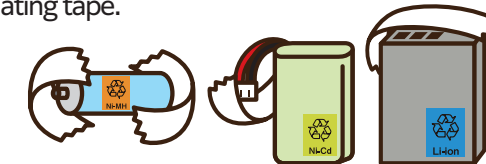
1. Town office environment division
2. Town cooperating store

Japan Portable Rechargeable Battery Recycling Center HP



### HOW TO TAKE OUT THE GARBAGE

To prevent ignition, please stick an insulating tape.



## Button battery Coin battery

### Place

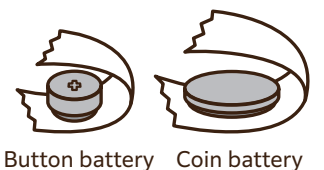
1. Town office environment division
2. Town cooperating store

BATTERY ASSOCIATION OF JAPAN HP



### HOW TO TAKE OUT THE GARBAGE

To prevent ignition, please stick an insulating tape.



**Toei** 不用品処分 | お片付け | リサイクル | つまり | 水漏れ

**トーエイ株式会社**

本社: 東浦町大字藤江字ヤンチャ28-1

☎ **0120-450-855**

シゴトはココ

リサイクル  
不用品整理  
ご一報ください

HPはこちら

生前遺品整理 / 引越しの多量ごみ / ゴミ屋敷・汚部屋

**片付けトントン**

☎ **0120-947-479**

受付は年中無休  
**8:00~20:00**

→ ホームページ

株式会社 中西

## ASUPA Free Distribution

Let's compost raw garbage by ASUPA and reduce the waste!

ASUPA is distributed at community center, Shukaijyo (Moriokadai and Hiraikadai), Fureai center, Fujie Kouminkan, and town office.

We place a pay advertisement for establishment of source of revenue. Please ask the advertiser directly about the advertisement details.



Classification Table of Household Wastes

Burnable garbage→burnable

Non-burnable garbage→incombustible

Recyclable waste→recyclable

Bulky waste→bulky

Waste not collected in town→no collection

Ignitable waste→dangerous

Things longer more than 60cm of height, depth and width belongs to bulky waste. (However, garbage exceed-ing 2m is not possible for disposal at Tobu Chita Clean Center. Please contact the waste disposal specialists.)

Separate the recycled waste and dispose at the area station.

Accordingly the amount of garbage that was collected as recycled waste that was separately disposed at the garbage station will be added as a subsidy to the area where you live.

Sound	Items	Classification	Note
あ	Iron	incombustible	
	Ironing board	incombustible	Bigger than 60cm belongs to bulky waste.
	Adapter	incombustible	
	Shutter	bulky	
	Album	recyclable	[Various papers]
	Aluminum	burnable	Aluminum pan is incombustible.
い	Antenna	incombustible	Bigger than 60cm belongs to bulky waste.
	A set of drawers	recyclable	[Manufactured plastic goods ]
	Chair (aluminum and metals)	incombustible	Bigger than 60cm belongs to bulky waste.
	Chair (wood)	burnable	Bigger than 60cm belongs to bulky waste. Plastic is [Product plastic]
	Unicycle (use for riding)	incombustible	Bigger than 60cm belongs to bulky waste.
	Unicycle (use for transportation)	bulky	
う	Tumble dryer	no collection	Household appliances recycling
	Flowerpot (ceramic)	recyclable	[Ceramics] Plastic is [product plastic]
	Wristwatch	incombustible	Remove the battery.
	Baby carriage	bulky	
え	Air-conditioning (include an outdoor unit)	no collection	Household appliances recycling
	Liquid Crystal Television	no collection	Household appliances recycling
	Electronic organ	bulky	
お	Oil heater	incombustible	Bigger than 60cm belongs to bulky waste.
	Audio rack	bulky	
	Motorcycle	no collection	Two-wheeled vehicle recycling
	Oven toaster	incombustible	
	Multifunction microwave oven	incombustible	
	Toy (plastic)	recyclable	Remove the battery [Manufactured plastic goods ]
	Folding chair	bulky	
	Organ	bulky	
か	Car navigation	recyclable	[Compact appliances]
	Carpet	burnable	
	Nursing Care Bed(without motor )	bulky	
	Nursing Care Bed(with motor)	no collection	Difficult disposal stuff, Special trader
	flashlight	burnable	Made of metals is incombustible.Remove the battery
	Pocket warmer	burnable	
	Mirror	incombustible	
	Child's desk for study	bulky	
	Frame (wood)	burnable	Made of metals and glass is incombustible. Plastic is [Product plastic]
	Wall clock	burnable	Made of metals is incombustible.Remove the battery
	Umbrella	incombustible	
	Umbrella stand (wood)	burnable	Made of metals is incombustible. Plastic is [Product plastic]
	Humidifier	incombustible	
	Gas Range	incombustible	Bigger than 60cm belongs to bulky waste.
	Gas stove	incombustible	
	Cassette tape	recyclable	With a case[Manufactured plastic goods ]
	Cassette cylinder *2	dangerous	Throw it without making holes.
	Heated tobacco	recyclable	At the Environment Division counter.
	Bag	burnable	
	Disposal diaper	burnable	Should be flushed in the toilet
	Colored box	bulky	
	Glass door	bulky	
	Tile	no collection	Difficult disposal stuff, Special trader
	Desiccant (slaked lime)	burnable	
	Desiccant (silica gel)	burnable	
	Battery	recyclable	Stronghold collection
き	Twig	burnable	The length is below 60cm and the width is below 40cm.
	Keyboard (instrument)	incombustible	Bigger than 60cm belongs to bulky waste.
	A single item of keyboard	incombustible	

Sound	Items	Classification	Note
	Guitar	bulky	With a case
	Mirror stand	bulky	Below 60cm belongs to non-burnable waste.
	Safe	incombustible	Fire proof safes are difficult to dispose.
<	Air cleaner	incombustible	
	Portable bassinet	burnable	Bigger than 60cm belongs to bulky waste.
	Cooler box	recyclable	Take off the metal part. [Manufactured plastic goods ]
	Grass	burnable	
	Mowing machine (for agriculture)	no collection	Difficult disposal stuff, Special trader
	Shoes	burnable	
	Cushion	burnable	
	Glass	incombustible	
	Wheelchair	bulky	
け	Fluorescent light	incombustible	
	Cell phone	recyclable	[Compact appliances]
	Game software	burnable	
	Game player	recyclable	[Compact appliances]Remove the battery.
	Shoe rack	bulky	
	Sphygmomanometer (digital)	recyclable	[Compact appliances]Remove the battery.
	Health equipment	incombustible	Bigger than 60cm belongs to bulky waste.
	Motorized bicycle	no collection	Two-wheeled vehicle recycling
こ	Coffee-maker	incombustible	
	Kotatsu	bulky	House-to-house collection in-cluding the wooden table
	Copying machine	incombustible	
	Golf set	bulky	With a bag
	Concrete block	no collection	Difficult disposal stuff, Special trader
	Socket (electric cord)	incombustible	
さ	Surfboard	bulky	
	Sideboard	bulky	
	Bony parts of a fish	burnable	
	Sake pack (inside is silver)	recyclable	[Various papers]
	Rusted can	incombustible	
し	Dish (ceramics)	recyclable	[Ceramics]Stronghold collection, or incombustible
	Tricycle	bulky	
	CD (with a case)	recyclable	[Manufactured plastic goods ]
	CD deck, player.	recyclable	[Compact appliances]
	Magnet	incombustible	
	Kitchen system	no collection	Difficult disposal stuff, Special trader
	Moisture absorber	burnable	Remove the water inside
	Bicycle	bulky	
	Spare parts for bicycle	no collection	Difficult disposal stuff, Special trader
	Lawn mower	bulky	
	Combination juicer and mixer	incombustible	
	Carpet	burnable	
	Fire extinguisher	no collection	Difficult disposal stuff, Special trader
	Shoji (Paper sliding door)	bulky	
	Dehumidifier	incombustible	Bigger than 60cm belongs to bulky waste.
	Dish drier	incombustible	
	Dish closet	bulky	
	Artificial grass	burnable	
す	Ski boots	burnable	
	Spray can *2	dangerous	Throw it without making holes.
	Sponge	burnable	
	Water bottle (made of stain-less steel)	incombustible	Plastic is [product plastic]
	Rice cooker	incombustible	
	Suitcase	burnable	Bigger than 60cm belongs to bulky waste.
	Ski board (include a ski stick)	bulky	
	Skateboard	bulky	

Sound	Items	Classification	Note
	Stereo set	incombustible	Bigger than 60cm belongs to bulky waste.
	Snowboard	bulky	
	Spring mattress	bulky	Directly at the Clean Center.
せ	Oil stove	incombustible	Except for Kerosene and battery
	Washing machine	no collection	Household appliances recycling
	Pruning waste	burnable	
	Electric fan	incombustible	
	Dressing table (wash stand)	bulky	Only movable type
そ	Vacuum-cleaner	incombustible	Hose and nozzle are burnable
	Sofa	bulky	
た	Clinical thermometer (electronic)	recyclable	[Compact appliances]Remove the battery.
	Mercury thermometer(body)	recyclable	At the Environment Division counter.
	Scales	recyclable	[Compact appliances]Remove the battery.
	Dining chair	bulky	
	Dining table	bulky	
	Tire (bicycle, motorcycle)	no collection	Difficult disposal stuff, Special trader
	Desk cooking stove	incombustible	
	Tatami	bulky	
	Dresser	bulky	
ち	Infant safety seat	bulky	
	Teacup (ceramics)	recyclable	[Ceramics]
	Kitchen counter	bulky	
つ	Table	bulky	
て	DVD player	recyclable	[Compact appliances]
	TV	no collection	Household appliances recycling
	Electric carpet	burnable	
	Electric rice-cooker	incombustible	
	Electric razor	recyclable	[Compact appliances]
	Electric heater	incombustible	
	Electric pot	recyclable	[Compact appliances]
	Electric blanket	burnable	
	Light bulb	incombustible	
	E-cigarette	recyclable	At the Environment Division counter.
	Electronic piano	bulky	Below 60cm belongs to non-burnable waste.
	Microwave	incombustible	
	Electronic calculator	recyclable	[Compact appliances]Remove the battery.
	Drip infusion pack (for home use)	burnable	Needle will go to a medical institution
	Electric assistant bicycle	bulky	Except for battery
	Electric wheelchair	bulky	Except for battery
	Telephone	recyclable	[Compact appliances]
と	Door	bulky	
	Toilet seat	burnable	Attached shower is incombustible
	Kerosene (small amount)	no collection	Difficult disposal stuff, Special trader
	Zinc	bulky	
	Dryer	recyclable	[Compact appliances]
	Paint	no collection	Difficult disposal stuff, Special trader
	Food tray	recyclable	[Containers and packaging made of plastic]
	Earthenware pot	recyclable	[Ceramics]
な	Sink	bulky	system kitchen is difficult disposal
	Long table	bulky	
に	Doll	burnable	
ぬ	Stuffed toy	burnable	
ね	Cat sand (for deodorization)	burnable	
は	Barbecue cooker	incombustible	
	Ladder (less than 2 meters)	bulky	2m bigger items are difficult to dispose.
	Wall clock	burnable	Made of metals is incombustible.
	Computer	recyclable	Collection of computer refer to page 3
	PC desk	bulky	
	Styrofoam	recyclable	[Containers and packaging made of plastic]
	Fireworks	burnable	Use up all its contents and moisten it

Sound	Items	Classification	Note
ひ	BS tuner	recyclable	[Compact appliances]Remove the battery.
	Piano	no collection	Difficult disposal stuff, Special trader
	Beer bottle	recyclable	[Bottle]
	Videotape	recyclable	With a case[Manufactured plastic goods ]
	Vinyl pool	burnable	For children
	Vinyl hose reel	burnable	Made of metals is incombustible
ふ	Fax paper	recyclable	[Various papers]
	Fan heater	incombustible	
	Fusuma(Japanese sliding door)	bulky	
	Futon *1	burnable	
	Plastic cup	recyclable	[Manufactured plastic goods ]
へ	Printer	incombustible	
	Floppy	recyclable	With a case[Manufactured plastic goods ]
	Bathtub Lid	burnable	Bigger than 60cm belongs to bulky waste.
	dung of pet	burnable	
	Bed	bulky	
ほ	Stroller	bulky	
	Baby dresser	bulky	
	Belt	burnable	Buckle is incombustible.
	Kitchen knife	incombustible	Need to be wrapped by papers.
	Bowling Ball	burnable	Directly at the Clean Center.
ま	Ball	burnable	Golf, baseball, tennis, etc.
	Ballpoint pen	burnable	Contents are combustible, outer cas-ing is made of manufactured plastic.
	Hot plate	incombustible	
	Plastic container	recyclable	Discharge all its contents [Manufactured plastic goods ]
	Refrigerant	burnable	
み	Bond (for wood)	burnable	
	Mah-jong piece	recyclable	[Manufactured plastic goods ]
	Massage machine	bulky	Below 60cm belongs to non-burnable waste.
	Mattress (with spring)	bulky	Directly at the Clean Center.
	Mattress (without spring)	bulky	It will be burnable if you put it into specified bag.
め	Sewing machine	incombustible	
も	Alarm clock	incombustible	Remove the battery
	Blanket	burnable	
	Motor	no collection	Difficult disposal stuff, Special trader.
	Rice cake (Mochi) Marker	incombustible	
	Mop	burnable	
や	Lumber (before breaking up and classification)	no collection	Difficult disposal stuff, Special trader.
	Laundry pole	bulky	2m bigger items are difficult to dispose.
	Laundry pole stand (cement)	bulky	
	Mobile battery	recyclable	As a small rechargeable battery.
	Peel and trash of vegetables	burnable	
ゆ	Water heater (gas)	incombustible	
	Lighter *2	dangerous	Use up all its contents
	School Bag	burnable	Take off the metal part.
れ	Refrigerator (with freezer)	no collection	Household appliances recycling
	Fan cooler (with Freon)	no collection	Difficult disposal stuff, Special trader.
	Fan cooler (without Freon)	incombustible	
	Recording board	recyclable	[Manufactured plastic goods ]
	Record player	recyclable	[Compact appliances]
ろ	Brick	no collection	Difficult disposal stuff, Special trader.
	Candle	burnable	
	Rope	burnable	

\*1...Put in a specified garbage bag or fold it one by one, tighten it together with a large size of specified garbage bag and dispose.  
\*2...Place the Spray can, cassette bomb, and lighter metals, bottles, plastic bottles in each special collection container on collection day.

For unlisted items, please use the waste separation for searching on “LINE” or contact the Environmental Division.



Town Official “LINE” here.